



Ancient Olive Trees, Italy Photographer: Bill DeVoti

Housatonic Camera Club



Newsletter March 2015

<http://www.housatoniccameraclub.com>

Newsletter Contact: d1295@aol.com

PRESIDENT: RICK PAULINE WEBMASTER: LAZLO GYORSOK EDITOR: DAWN DINGEE

IN THIS ISSUE

NECCC - The following pictures were voted into NECCC's nature competition for March



Snow Storm Clearing ~ Bill DeVoti



Baby Steps ~ Bert Schmitz



Eagle's View ~ Dawn Dingee



Winter's Isolation ~ Judith Gott

Welcome to the March 2015 issue of the Housatonic Camera Club Newsletter. The following is included in this month's issue:

NECCC Nature entries	1
March Meeting	2
Upcoming Events	2
March PSA entries	3
Committee Members	4
NECCC pictorial entries	4
Member Profiles	5
Announcements	6
PSA Nature Photography Definition	7-8
2014 - 2015 Club Meeting Schedule	8
HCC Enrollment Form	9

MARCH MEETING

Please join us for our March meeting where Brad and Karin Smith will provide us with *A Brief Historic Look at Photography as Fine Art*

Probably the simplest way to describe FINE ART PHOTOGRAPHY is to define it as "*photography that is created (not just captured) to express the artist's perception of the world.*"

We've compiled a show of some of history's iconic photographers and their works that has meaning to us and have made selections of categories in photography, such as architectural/urban, portraiture, fashion, nature, still life, photo journalism, commercial, street, to name a few.

As we study their work, we begin to gain insight in what makes a photograph great, and will lead us to discover our own photographic "heroes."

There is a deeper meaning in many of history's great images, and we should make time to look at them a bit closer. Whenever possible, go and look at photographic exhibits, or go online and research important photographers in history. View their images, look at their books, watch documentaries on their lives and work and discover whose work we relate to, or who we aspire to be like.

UPCOMING EVENTS

Geer Village Show

The club will be hosting a photo exhibit at Geer Village located at 77 S Canaan Rd (Rt.7), Canaan, CT through the end of April. There is no opening reception since the show is running so close to White Silo (see below). Geer Village has a beautiful building to walk through - small, nice, with an inexpensive restaurant (Kristin Marie's Cafe & Grill); many talks and events; all open to the public.

Photography Exhibit by members of the Housatonic Camera Club - April 2015

The club will be hosting a photo exhibit at the *White Silo Farm & Winery* in Sherman, CT from April 4th - 26th. *White Silo* is a family operated boutique winery specializing in small batch fruit and grape wine production. In addition to wine production, they make gourmet farm products and grow a variety of berries, fruits and vegetables. There will be 11 members participating in the show (entries for this show are closed). The opening reception will be April 11th from 1pm - 4pm. Please contact Judith Gott to sign up for refreshments.

HVPN presents George Lepp - May 2015

The HVPN presents George Lepp in an all day photo conference - <http://www.georgeleppimages.com/> Saturday, **May 9, 2015**, at Mount Saint Mary College, Newburgh, NY from 9:00 AM- 4:00 PM. Cost is \$26 which includes lunch. Regular registration begins in February but if you want to register early, send check for \$26 payable to **Hudson Valley Photography Network** to Thomas Vaillancourt, PO Box 242, Goshen, NY 10924.



PSA COMPETITION ENTRIES FOR MARCH - THE FOLLOWING PICTURES WERE VOTED INTO THE PSA MARCH COMPETITION BY THE CLUB.



INSPECTED BY 33 ~ DAWN DINGEE



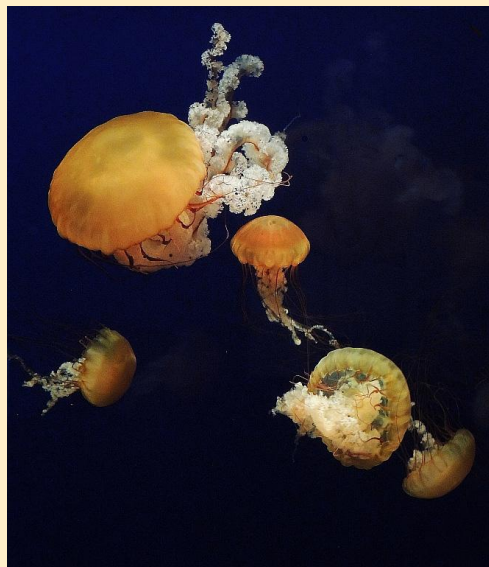
HORIZONS ~ RICK PAULINE



ABOVE THE CLOUDS ~ JOHN LANDON



PARKING LOT PENANG ~BIRGITT PAJAROLA



DANCE OF THE JELLIES ~ JANE ROSSMAN



PORTRAIT OF A FARMER ~ LAZLO GYORSOK

HOUSATONIC CAMERA CLUB REPRESENTATIVES
for 2014/2015 season

President	Rick Pauline
Vice President	<i>Open</i>
Treasurer	Judy Becker
Membership/Dues	Judy Becker
Publicity	Jeffrey Breitman
Webmaster	Lazlo Gyorsok
Newsletter	Dawn Dingee
Competitions	Brian Wilcox
Salon Committee	Ann Dillon Wilkinson Bill DeVoti
Hospitality	Judith Gott Karin Smith
Liaison Representatives	PSA - Rick Pauline NECCC - Bert Schmitz



On the lookout ~ Dawn Dingee

NECCC - The following pictures were voted into NECCC's pictorial competition for March



End of the Road ~ John Landon



Trishaw Home ~ Birgitt Pajarola



Puddle of Love ~ Brian Wilcox



Quiet Conversation ~ Lazlo Gyorsok

MEMBER PROFILES – BRAD & KARIN SMITH

Brad Smith

A native of Kent, Connecticut, Brad was a managing partner of the Northern Exposure Photographic Gallery in Kent and Cornwall, CT. He has exhibited in the Yale Student Group Show at Cornell University; New Haven on The Green Art Festival; had a one man show at the Stony Brook Library; a group exhibit at the former Company Store in Kent, together with David Armstrong and Eric Sloane; Tieglietto Gallery; the Washington and Kent Art Associations, to name a few. Brad is a graduate of the South Kent School and received his BFA from Yale University School of Art where he studied with Josef Albers, Rico LeBrun, and with the photographer/designer Herbert Matter. smithmonochromes@charter.net

Karin Smith

Karin Smith grew up in Europe under the artistic guidance of her mother, a watercolor artist and photographer. Today Karin directs her lens to studies of still life, in the real and abstract, and to natural landscapes. With her husband, Brad, she was a managing partner in the former Northern Exposure Photographic Gallery, where together with a small group of dedicated photographers they sought to create an environment to promote and exhibit photographic art. Karin has held memberships in area art associations and was the chairperson for the annual New Milford Art Festival (on the Green) for 2003. Her award winning photograph, "Housatonic Autumn," was featured in an exhibition at the Norman Rockwell Museum, Stockbridge, Ma. In 2004. smithmonochromes@charter.net



Don't forget to submit your photos for the "HOME" and "MOTION" folders....here are examples of photos already submitted.



On the beach ~ Bert Schmitz



Twist & Turn ~ Lazlo Gyorsok

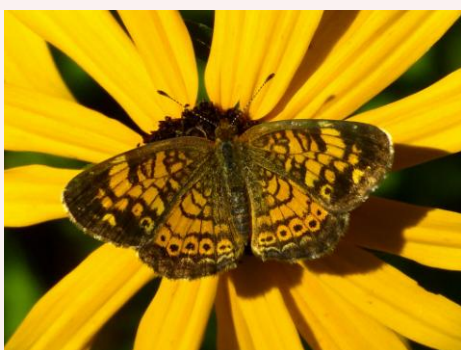


Abandoned Home ~ Dawn Dingee

17 DAYS UNTIL SPRING!!!!!!!!!!!!



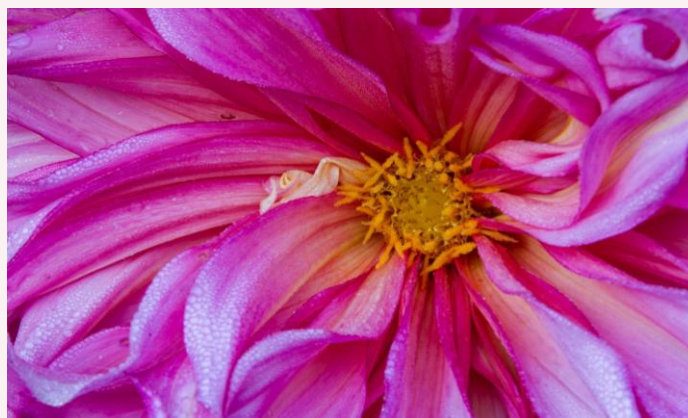
Pansies ~ by Dawn Dingee



Butterfly~ by Jane Rossman



Dahlia 2 ~ by Judith Gott



Dahlia ~ Brian Wilcox

Announcements

Message to New Members

Member profiles are a good way to share information about yourself and your love of photography. If you do not have a current profile on file, please submit one to Bill DeVoti (abundancehill@verizon.net). And don't forget to submit some photos to be used in the newsletter along with your profile.

Refreshments needed for March Meeting

Please consider signing up to bring refreshments to our March meeting. Judith Gott was originally scheduled to bring refreshments and unfortunately cannot make the meeting. She is asking for another member to volunteer OR she can trade with one of our members scheduled to bring refreshments in April or May. Please contact Judith if you are able to volunteer - jgott.gott@gmail.com.



PSA 77th annual Conference
September 27 - October 3, 2015

Holiday Inn West Yellowstone 315 Yellowstone Avenue, West
Yellowstone, MT 59758

<https://www.psa-photo.org/index.php?2015-psa-conference>

2015

NECCC

70th Annual NECCC Photography Conference

Deadline to register has been extended to March 15, 2015

July 17 - 19, 2015
Amherst, MA

<http://www.neccc.org/p/2015-conf.html>

PSA Nature Photography Definition from PSA Journal Sept 2014

It was announced in May 2014, that PSA, FIAP (Federation Internationale de l'Art Photographique) and RPS (Royal Photographic Society) joined forces and developed a common definition for Nature Photography for use by all international exhibitions recognized or patronized by any or all of these organizations. The new guidelines went into effect on January 1, 2015.

I. Nature photography is restricted to the use of the photographic process to depict all branches of natural history, except anthropology and archaeology, in such a fashion that a well-informed person will be able to identify the subject material and certify its honest representation.

◆The story telling value of a photograph must be weighed more than the pictorial quality while maintaining a high technical quality.

◆Human elements shall not be present, except where those human elements are integral parts of the nature story such as nature subjects, like barn owls or storks, adapted to an environment modified by humans, or where those human elements are in situations depicting natural forces, like hurricanes or tidal waves.

◆The definition does not allow replacing the background from another image, or cloning out content from the original image. This restriction of closing out content includes what you may think is inconsequential, such as a blade of grass in front of the animal's face. If you cannot crop it out, you must live with it if you intend to use the image in a Nature or Wildlife section of an exhibition.

◆Both the old PSA and FIAP definitions and the new common definition prohibit human elements that are not an integral part of the nature story. Human elements are not limited to people or parts of people in the image. Human elements that can cause your image to be disqualified, or at best scored low, include but are not limited to:

- Roads, Paths, vehicle tracks or trails
- Fences and fence posts
- Signs
- Power poles
- Wires
- Buildings (or part of buildings)
- Walls or parts of walls
- Mowing and plowing patterns in fields
- Cut tree stumps, cut off limbs, branches or stems
- Jesses and thongs on legs of raptors and other birds (NOTE: scientific bands, scientific tags or radio collars on wild animals is permissible)



◆Photographs of human created hybrid plants, cultivated plants, feral animals, domestic animals, or mounted specimens are ineligible, as is any form or manipulation that alters the truth of the photographic statement.

◆No techniques that add, relocate, replace or remove pictorial elements except by cropping are permitted.

- Adding a vignette not originally produced by the camera is not allowed.
- Stitched images are not permitted.
- Infrared images, either direct-capture or derivations, are not allowed.
- Color images may be converted to grayscale monochrome.
- All allowed adjustments must appear natural.

◆Techniques that enhance the presentation of the photograph without changing the nature story or the pictorial content, or without altering the content of the original scene, are permitted including HDR, focus stacking and dodging/burning. Deliberately blurring the background is not allowed.

continued on next page

HOUSATONIC CAMERA CLUB MEETING SCHEDULE FOR THE 2014 – 2015 SEASON

Meetings: 3rd Tuesday of the Month (Sept - June)
 Where: Noble Horizons, 17 Cobble Rd, Salisbury, CT
 Time: 7:00 pm (open to the public)
 For directions, click here [Google Maps](#)

March 17: Fine Art Photography by Brad and Karin Smith. Review of competition images.

April 21: Review/Discussion of Assigned Topics: Home, Motion Showing of the NECCC Digital Circuit

May 19: Presentation by Joe Meehan, program T.B.A.

June 16: End of Year Dinner and Recorded Commentary— 30 club images

PSA Nature Photography Definition continued

◆The new definition does include some examples of human elements that are integral parts of the nature storey. Other examples of allowable human elements include:

- Birds nesting or feeding young on or in man-made objects
- Insects depositing eggs or egg sacs in man-made objects.
- Animals eating fresh kills on fence posts, pilings, in roadways, etc.
- A flood with raging water with a house or other human element floating in the flood.
- A tornado ripping apart buildings or throwing around human elements.
- The "natural force" examples show nature stories where these natural forces are out of control.
- They keys are whether the judge considers the human elements integral to the story and considers the nature story strong.

◆The new definition reinforces the exclusion of any Llamas and Alpacas because those have always been domestic animals and have no ancestors that were never domesticated.

◆Cultivated plants are those that are grown specifically in decorative gardens and for food. Wildflowers planted in botanical gardens are allowed subjects in the same manner that wild animals in zoos are allowed subjects.

II. Images used in Nature Photography competitions are divided into two classes: Nature and Wildlife.

- These images can have landscapes, geologic formations, weather phenomena, and extant organisms as the primary subject matter.
- This includes images taken with the subjects in controlled conditions, such as zoos, game farms, botanical gardens, aquariums and any enclosure where the subjects are totally dependent on man for food.

The above definition interpretation was provided by Daniel Charbonnet, FPSA, EPSA, Vice President, Exhibition Services

Housatonic Camera Club Membership Enrollment 2014—2015

I wish to enroll as a member for one year. Attached is the membership fee of \$25.00 (and \$10.00 for each additional family member).

Please hand or mail this form to the Treasurer, Judy Becker, 432 Undermountain Road, Salisbury, CT 06068-1101 (Email: judybecker40@att.net Phone: 860-435-2263)

PLEASE PRINT CLEARLY!

NAME(S): _____

ADDRESS(ES): _____

PHONE: _____ E-MAIL: _____

WE WILL SEND YOU OUR MONTHLY NEWSLETTERS, SCHEDULES, AND CLUB INFO.

Y _____