



©Lazlo Gyorsok

# Housatonic Camera Club Newsletter

## December 2016

Newsletter Editor: Dawn Dingee ([d1295@aol.com](mailto:d1295@aol.com))  
<http://www.housatoniccameraclub.com>

CO-PRESIDENTS: DAWN DINGEE & JEFF BREITMAN WEBMASTER: LAZLO GYORSOK

IN THIS ISSUE

## President's Message

by Dawn Dingee  
 Jeff Breitman

**W**e will have our annual Christmas Dinner at our **December 20<sup>th</sup>** meeting. The dinner will be catered by the folks at Noble just as it was last year. We had 18 members sign up and we typically request 20 before going with the catered option but we decided to move forward anyway. We will have a 50/50 raffle and the HCC funds will go towards offsetting the costs so hope you can participate for a chance to win! Remember the cost is \$20/person. We had a great time last year so hope you can attend.



Photos from 2015 HCC Christmas Dinner

Don't forget to submit your photos for the 2nd **PSA** competitions for **TRAVEL** and the **OPEN** category. Photos are due to Lazlo by **December 11<sup>th</sup>** – don't wait until the last minute! Please review Bert's email regarding file sizes and naming convention and look for future email regarding voting.

For *February's* meeting, we are looking for 3-4 members to volunteer to do a 15-20m program on any topic. If you are willing, please let Jeff and I know. If you have a topic you would like to see covered, let us know that too. Hope to see you at the dinner! ☺

Welcome to the December Issue of the Housatonic Camera Club Newsletter. The following is included in this month's issue:

President's Message	1
December Meeting	2
Upcoming Events	2
Wide Angle Lens Quirks	3
Announcements	4
NECCC Competition Results	5-6
PSA Competition Results	6
Last Month's Speaker	7
Super Moon	8
Assigned Topic	9
Club Schedule	10
Enrollment Form	11

## December Meeting



### UPCOMING EVENTS

#### Noble Horizons Salon Show – January 2017

Our annual Noble Horizons Salon Show will take place from **January 20, 2017 – February 21, 2017**. Opening reception will be January 20<sup>th</sup> 5-7pm. Drop off dates are January 14<sup>th</sup> and 15<sup>th</sup>. Ann sent out bios we have on file – please review and provide feedback to Ann by November 30<sup>th</sup> if you plan on participating in the show. Caroline at Noble has requested a few photos for the promotion of the show so if you have a photo you would like considered, please contact Bill at [abundancehill@verizon.net](mailto:abundancehill@verizon.net). Stay tuned for more details as the show gets nearer.

If you are aware of any upcoming photo opportunities, shows, events etc., please forward the information to me at [d1295@aol.com](mailto:d1295@aol.com) for inclusion in the next newsletter.

## Wide Angle Lens Quirks By John Landon

I had this problem on my trip West with a new wide-angle lens - I thought the filter was defective and ruined several shots. I spent a lot of time trying to figure out what the problem was. I just learned that it is a universal issue with wide-angle lenses. The following information was taken from <http://havecamerawilltravel.com/photographer/polarizing-filter-wideangle-lens>

“...there’s another one to look out for with polarizers: they don’t work well on **extreme wide-angle lenses**. That’s not to say they don’t work at all, just that they need to be used with care. It’s a problem of physics. The polarizing effect is directly related to the angle from the light source. Extreme wide-angle or fisheye lenses can cover an extraordinarily wide field of view—up to 180° in a few cases. So if a lot of your frame is blue sky, there’s a good chance you’ll end up with bands of lighter and darker shades across the sky. A further complication is that you won’t really see the full effect through the viewfinder, and it’s not always easy to see on the camera’s LCD screen with all its reflected light. So you might not notice it until you get your images home onto your computer.



10mm (15mm equiv) | f/11 | 1/125 | Circular Polarizing Filter

With a wide-angle you can also end up with near black at the top of the frame. That can be a good or bad thing depending on what you’re going for. If you look at the sky in the immediate area around the dome in this shot, it’s roughly the same as the shot above. But because this shot is taken at the widest end of at 10-20mm lens and therefore the frame spans the area of the sky 90° from the sun, the blue at the top of frame is much darker. To my eye, the effect is overkill for this particular shot—the gradient is just too strong and sharp in the context of the whole frame—although there are some subjects where it can be used to great effect.



10mm (15mm equiv) | f/11 | 1/125 | Circular Polarizing Filter



18mm (36mm equiv) | f/11 | 1/125 | Circular Polarizing Filter

The shot at left shows an extreme case of banding when zooming out to 10mm (15mm in 35mm equivalent). The polarizing effect is most intense in the middle of the frame, which was at around 90° to the sun. As you get both under and over that 90° the effect reduces, resulting in light bands. The shot at left shows that zooming in a bit can eliminate the problem. Where the precise threshold is varies based on things like angle to the sun, what’s in the frame, and what effect you’re aiming for.

# Announcements

## HOUSATONIC CAMERA CLUB REPRESENTATIVES for 2016/2017 season

Co-Presidents	Dawn Dingee Jeff Breitman <a href="mailto:housatonic_camera_club@yahoo.com">housatonic_camera_club@yahoo.com</a>
Vice President	Birgitt Pajarola <a href="mailto:birgitt923@yahoo.com">birgitt923@yahoo.com</a>
Treasurer	Judy Becker
Membership/Dues	Judy Becker <a href="mailto:judybecker40@att.net">judybecker40@att.net</a>
Publicity	Jeff Breitman
Special Events Coordinator	Jeff Breitman
Program Director	Jeff Breitman <a href="mailto:sylvan4570@comcast.net">sylvan4570@comcast.net</a>
Webmaster	Lazlo Gyorsok <a href="mailto:lazlo1@optonline.net">lazlo1@optonline.net</a>
Newsletter	Dawn Dingee <a href="mailto:d1295@aol.com">d1295@aol.com</a>
Secretary	Denise Rueger <a href="mailto:rrueger2@roadrunner.com">rrueger2@roadrunner.com</a>
Competitions	Bert Schmitz <a href="mailto:bschmitz@att.net">bschmitz@att.net</a>
Salon Committee	Ann Wilkinson <a href="mailto:stonefoxphoto@aol.com">stonefoxphoto@aol.com</a> Bill DeVoti <a href="mailto:abundancehill@verizon.net">abundancehill@verizon.net</a>
Hospitality	Jane Rossman <a href="mailto:jrossman222@gmail.com">jrossman222@gmail.com</a> Birgitt Pajarola <a href="mailto:birgitt923@yahoo.com">birgitt923@yahoo.com</a>
Projector Coordinator	Brian Wilcox <a href="mailto:ctphoto@comcast.net">ctphoto@comcast.net</a>
Liaison Representatives	PSA - Jane Rossman <a href="mailto:jrossman222@gmail.com">jrossman222@gmail.com</a> NECCC - Bert Schmitz <a href="mailto:bschmitz@att.net">bschmitz@att.net</a>

Proud Member of



[www.psa-photo.org](http://www.psa-photo.org)



[www.neccc.org](http://www.neccc.org)

## To all Club Members

For future editions of the newsletter, consider submitting:

- **Your favorite place to photograph**
- **The story behind the picture**
- **Places to Photograph**
- **Share photo printing tips**
- **Share photography tips**
- **Your photo blog or website URL**

## Message to New Members

**Member profiles** are a good way to share information about yourself and your love of photography. If you do not have a current profile on file, please submit one to Bill DeVoti at [abundancehill@verizon.net](mailto:abundancehill@verizon.net). Also, don't forget to submit a few photos to be used in the newsletter with your profile. I look forward to hearing from some of our newest members.

Club flickr site:

<https://www.flickr.com/photos/124371381@N07/>

Photos submitted to the club flickr site appear on the Housatonic Camera Club website on the HOME page.



## Membership Dues

Don't forget to pay your membership dues for the 2016/2017 season. Notices of past due accounts have been sent out so if you haven't paid yet, please see Judy Becker at our December meeting. Thank you.

"Photography is the simplest thing in the world, but it is incredibly complicated to make it really work."

—Martin Parr

"Photography is like a moment, an instant. You need a half-second to get the photo. So it's good to capture people when they are themselves."

—Patrick Demarchelier

# NECCC Competitions Results



<http://www.neccc.org/>

PSA pictorial and NECCC nature and pictorial competition entries were submitted last month. Below are the results from NECCC.

The three winning clubs in the **Pictorial** section **Class B** were:

Club	Score	Place
Cape Cod Art Association	79	1st
Housatonic	79	1st
Westfield	79	1st

The three winning clubs in the **Nature** section **Class B** were:

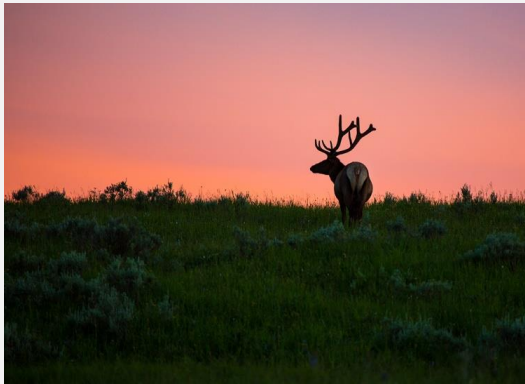
Club	Score	Place
Housatonic	85	1st
NE Shutterbugs	83	2nd
Westfield	83	2nd

For the first time, our club scored first in both categories. This is only Round 1 but this means we are in 1<sup>st</sup> place over all other clubs. In the Nature category, the following scores were received:

## NATURE



Housatonic	Dingee, Dawn	Pink Sunset	20	HM	
Housatonic	Landon, John	Silvereve On Seaweed	22	HM	
Housatonic	Schmitz, Bert	Growing Wild	22	HM	
Housatonic	Wilcox, Brian	Making The Web	21	HM	85



**Pink Sunset** ©Dawn Dingee



**Growing Wild** ©Bert Schmitz



**Making the Web** ©Brian Wilcox



**Silvereve on Seaweed** ©John Landon

# NECCC Competition Results (continued)

In the Pictorial category, the following scores were received:

## PICTORIAL



Housatonic	Dingee, Dawn	Elk Silhouette	19		
Housatonic	Landon, John	Quiver Tree Forest	21	HM	
Housatonic	Schmitz, Bert	Cat Lovers Delight	19		
Housatonic	Whalen, Scott	Stuart Strike	20	HM	79



Quiver Tree ©John Landon



Stuart Strike ©Scott Whalen

# PSA Competition Results

Housatonic Camera Club	Local Farm	Lazlo	Gyorsok	10
Housatonic Camera Club	Morning Beach Walk	Jane	Rossmann	6
Housatonic Camera Club	Porche Panning	Scott	Whalen	7
Housatonic Camera Club	Mt Taranaki Sunset	John	Landon	9
Housatonic Camera Club	Peek a Boo	Bert	Schmitz	12
Housatonic Camera Club	Red Fox pup	Brian	Wilcox	14 HM



## Last Month's Speaker – Birgitt Pajarola

At our November meeting, we had our very own Birgitt Pajarola as our guest speaker.



Birgitt is an independent travel agent at *Protravel International*. In her presentation, she shared some of her experiences and photographs from the many remote and less traveled places around the world she has traveled to including Yemen, Kashmir, China, the Himalayas, India, and Turkey among others. Birgitt especially likes to capture the people and culture of the locations she visits. She likes her photos to bring a story to life or elicit emotion which is evident in her photos.



Visit <http://www.birgittpajarolaphotos.com/> to see more of Birgitt's photos from her travels.

## SUPER MOON By Dawn Dingee

On Sunday, November 13, Rick and I drove up to the farm at "Hanover Hill" off Route 22 in Millerton, NY...the farm is long gone but the 3 silos are still standing (barely). We wanted to find a good area to photograph the Super Moon that was coming the following day. We figured the silos would look good in the foreground so we went there a day earlier to check it out. Rick downloaded an app on his iPhone that identified the exact time and the location of the moon based on the address you were at. We set up our tripods and cameras and then patiently waited. We were rewarded with a beautiful sunset where the sky went from purple to pink.



Deciding this was a good location to shoot the actual Super Moon the following night, we invited some friends along - Lazlo, Brian and Brian's friend Scott. Unfortunately, it was a cloudy night and we didn't see much of the moon. During the wait, we made the best of it by shooting each other, the clouds, and even the traffic on Route 22.



©Rick Pauline



©Brian Wilcox



©Lazlo Gyorsok



# ASSIGNED TOPIC – Say Cheese

Each month, we will have a newsletter “topic of the month” – members are encouraged to submit photos that are a good representation of the topic. This month’s topic was “SAY CHEESE”.



©Lazlo Gyorsok



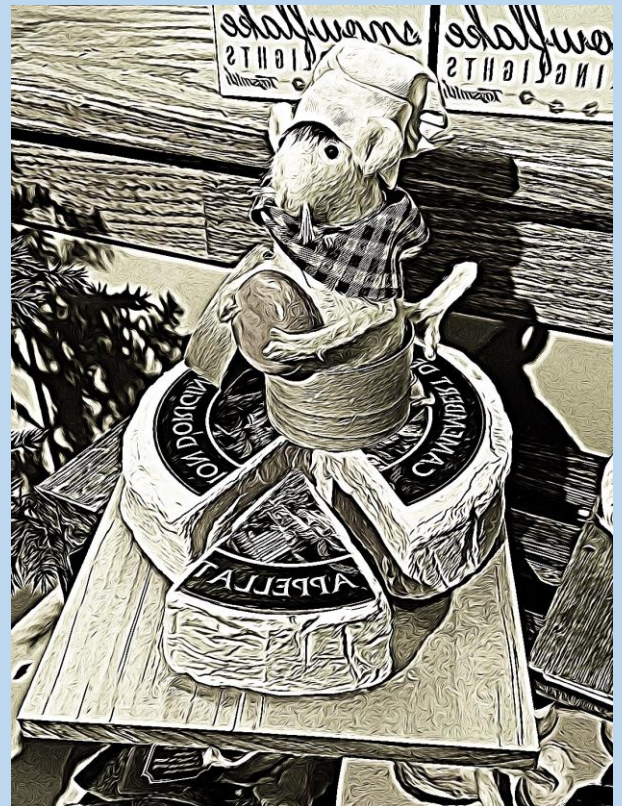
©Lazlo Gyorsok



©Judith Gott



©Dawn Dingee



©Rick Pauline

# Say Cheese!

## HOUSATONIC CAMERA CLUB MEETING SCHEDULE FOR THE 2016 – 2017 SEASON

Meetings: 3rd Tuesday of the Month (Sept - June)  
Where: Noble Horizons, 17 Cobble Rd, Salisbury, CT  
Time: 7:00 pm (open to the public)  
For directions, click here [Google Maps](#)

DECEMBER 20 (Community Room, Cobble Building)	Holiday Dinner followed by a review of Digital Circuit.
JANUARY 17 (Community Room, Cobble Building)	HCC Member Jeff Breitman – Topic TBD.
FEBRUARY 21 (Wagner Learning Center)	Noble Show Critique; 3-4 Internal Speakers - speakers TBD* <i>* 3-4 speakers on varying topics for approx. 15 minutes each on a chosen topic. Topics TBD.</i>
MARCH 21 (Community Room, Cobble Building)	Photographer Anne Day will present “iPhone photography”.
APRIL 18 (Community Room, Cobble Building)	Digital Circuit, Review Competition submissions.
MAY16 (Community Room, Cobble Building)	Photographer Joe Meehan will present “Infrared Photography”. We will also have our “Annual Swap Meet”.
JUNE 20 (Community Room, Cobble Building)	Happy Hour/Dinner followed by NECCC Recorded Commentary.

---

# Housatonic Camera Club

## Membership Enrollment 2016—2017

I wish to enroll as a member for one year. Attached is the membership fee of \$25.00 (and \$10.00 for each additional family member).

Please hand or mail this form to the Treasurer, Judy Becker  
13 Housatonic Ave. Canaan, CT 06018-2421; Email: judybecker40@att.net; Phone: 860-824-0561

PLEASE PRINT ONLY ... AND CLEARLY!

NAME(S): \_\_\_\_\_

ADDRESS(ES): \_\_\_\_\_

\_\_\_\_\_

PHONE: \_\_\_\_\_ E-MAIL: \_\_\_\_\_

WE WILL SEND YOU OUR MONTHLY NEWSLETTERS, SCHEDULES, AND CLUB INFORMATION